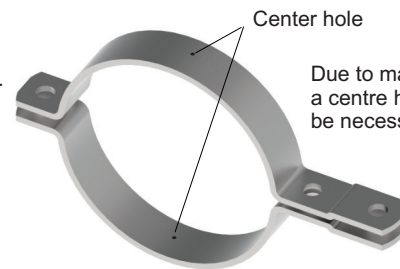
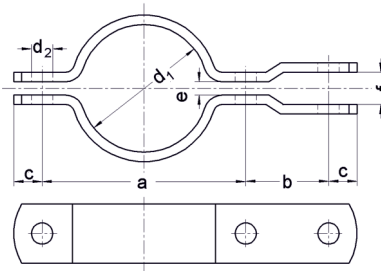


INDUSTRIAL PIPE CLAMPType **3567 C**

with rounded ends, according to DIN 3567 C

dipa

Also **STAINLESS** available
RUST
PROOF



Center hole

Due to manufactural reasons,
a centre hole boring may
be necessary.

d ₁	usage at nominal diameters		a	b	c	d ₂	e	f	Steel mm	Accessories: Hexagon head screws	kg per 100 pairs without
20 22	15	1/2"	57 59	46	15	11,5	7	12	30x5	2xM10x30 Mu + 1xM10x40 Mu	29 30
25 27	20	3/4"	62 66								32 33
30 34	25	1"	66 68								34 35
38 43	32	1 1/4"	76 82								37 38
57 61	50	2"	104 108	54	18	14	9	15	40x6	2xM12x35 Mu + 1xM12x50 Mu	77 78
70 77	65	2 1/2"	115 122								84 86
89	80	3"	136								95
108 115	100	4"	172 178	70	24	18	11	19	50x8	2xM16x45 Mu + 1xM16x60 Mu	203 207
133 140	125		196 204								220 226
159 169	150		222 232								240 252
191 194	175		254 258								273 282
216 220	200		280 284								301 309
267 273	250		342 348	86	30	23	14	22	60x8	2xM20x50 Mu + 1xM20x70 Mu	445 452
318 324	300		392 398								500 511
356 368	350		432 444								571 600
407 419	400		498 510	104	36	27	18	26	80x8	2xM24x60 Mu + 1xM24x80 Mu	964 980
457	450		548								996
508 521	500		600 614								1139 1160
610	600		717								1451
711	700		812					2712			
813	800		913					3014			
915	900		1016					3316			
1016	1000		1119					3614			

Specification

Material No. 1.0038, Surface: ordinary steel, galvanized, hot-dip galvanized, painted or stainless steel material-No. 1.4301 or 1.4571