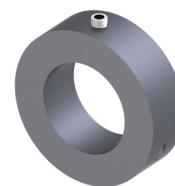
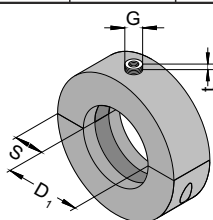


### Type 175

- with dipa® universal connecting sleeve

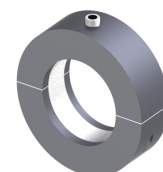


Item number	Pipe ø D1	Isolation thickness s (mm)	t	Mid threaded connection G (metric/inch) Standard	Mid threaded connection G possible on request	Item number	Pipe ø D1	Isolation thickness s (mm)	t	Mid threaded connection G (metric/inch) Standard			
26027735	12,0	30	10	Standard	possible on request	26004332	60,3	30	9,5	M10 / M12 / R ½"			
26004302	15,0	30	10			26004334	64,0	30	9,5				
26004304	17,2	30	10			26004336	70,0	30	9,5				
26004306	18,0	30	10			26004338	76,1	30	9,0				
26004308	21,3	30	10			26004340	88,9	30	8,5				
26004310	22,0	30	10			26004342	108,0	40	8,5				
26004312	26,9	30	10			26004344	114,3	40	8,5				
26004314	28,0	30	10			26004346	133,0	40	8,5				
26004316	33,7	30	7,5			26004348	139,7	40	4,5				
26004318	35,0	30	7,5			26004350	159,0	40	4,5				
26004320	42,4	30	7,5			26004352	168,3	40	5,0				
26004322	44,5	30	7,5										
26004324	48,3	30	7,5					26004354	219,1		60	0	M16 / R ¾"
26004326	51,0	30	7,5					26004355	219,1		60	0	R ¾"
26022471	54,0	30	9,5	M10 / M12 / R ½"		26004356	273,0	60	0	M16 / R ¾"			
26022472	57,0	30	9,5			26004357	273,0	60	0	R ¾"			



### Type 175 plus

- with dipa® universal connecting sleeve
- inclusive active seal
- no seal paste needed



**NEW**

Item number	Pipe ø D1	Isolation thickness s (mm)	t	Mid threaded connection G (metric/inch) Standard	Mid threaded connection G possible on request	Item number	Pipe ø D1	Isolation thickness s (mm)	t	Mid threaded connection G (metric/inch) Standard			
26027736	12,0	30	10	Standard	possible on request	26024148	60,3	30	9,5	M10 / M12 / R ½"			
26024134	15,0	30	10			26024150	64,0	30	9,5				
26024135	17,2	30	10			26024151	70,0	30	9,5				
26024136	18,0	30	10			26024152	76,1	30	9,0				
26024137	21,3	30	10			26024153	88,9	30	8,5				
26024138	22,0	30	10			26024154	108,0	40	8,5				
26024139	26,9	30	10			26024155	114,3	40	8,5				
26024140	28,0	30	10			26024156	133,0	40	8,5				
26024141	33,7	30	7,5			26024157	139,7	40	4,5				
26024142	35,0	30	7,5			26024158	159,0	40	4,5				
26024143	42,4	30	7,5			26024159	168,3	40	5,0				
26024208	44,5	30	7,5										
26024144	48,3	30	7,5					26024161	219,1		60	0	M16 / R ¾"
26024145	51,0	30	7,5					26024209	219,1		60	0	R ¾"
26024261	54,0	30	9,5	M10 / M12 / R ½"		26024163	273,0	60	0	M16 / R ¾"			
26024262	57,0	30	9,5			26024210	273,0	60	0	R ¾"			

Other diameters on request. Please tell us the requested pipe diameter.



Ordering designation: Type...  
e.g. 175

Diameter...  
ø35,0

Mid threaded connection...  
Standard

Item number  
26004318

Also STAINLESS available  
**RUST PROOF**